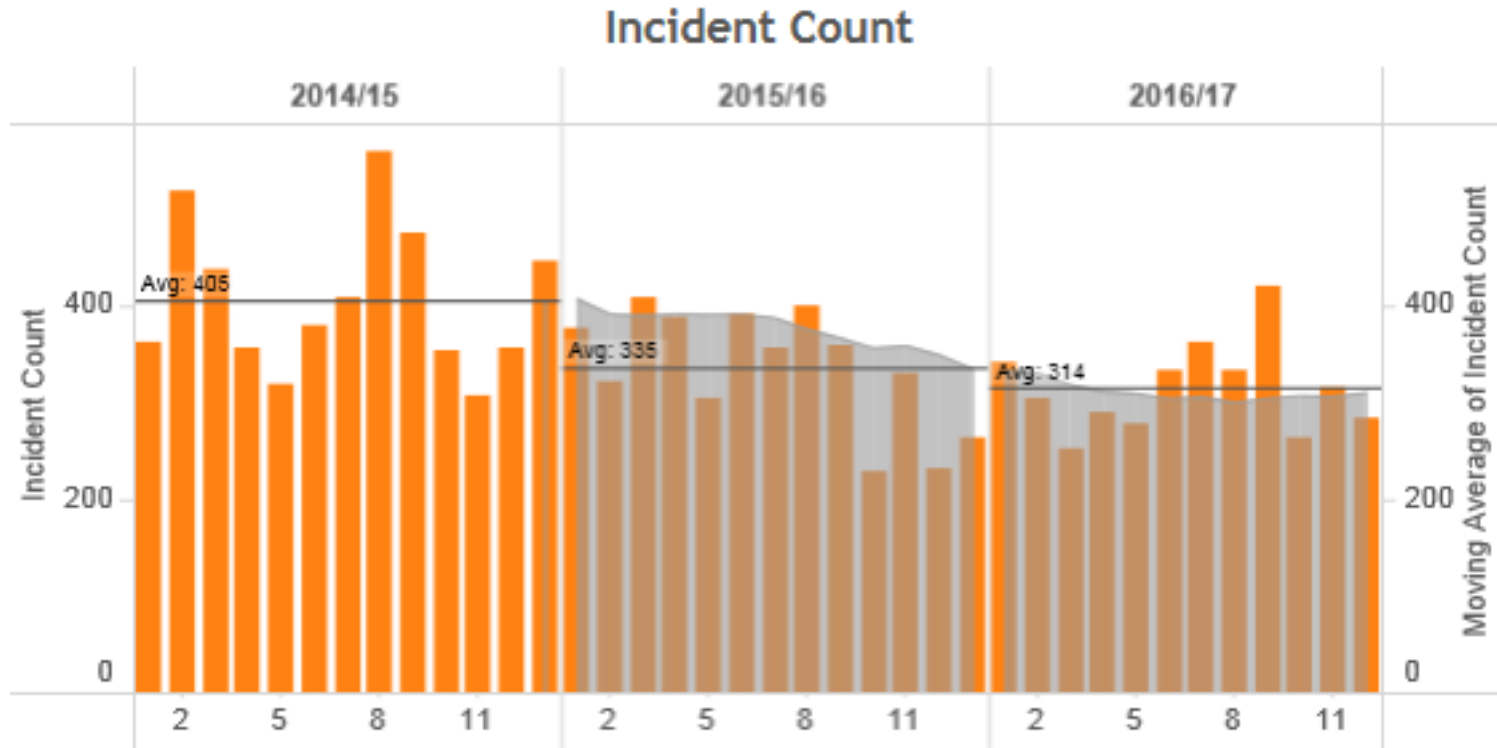


# ***Network Rail East Midlands Performance***

Muz Haque

**Joint Head of Performance**

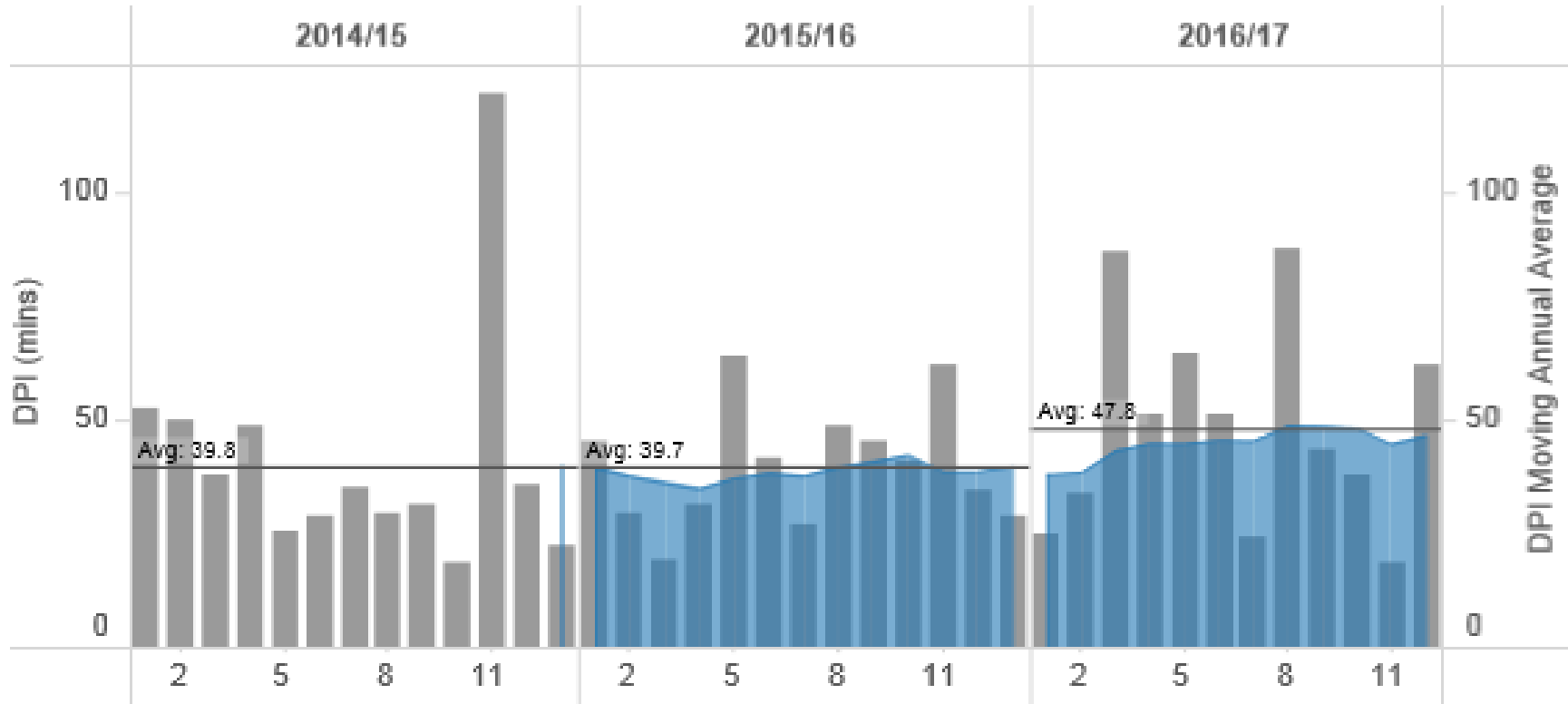
# Overview – NR Bedford Delivery Unit Area Incidents



Sustained reduction in incident count

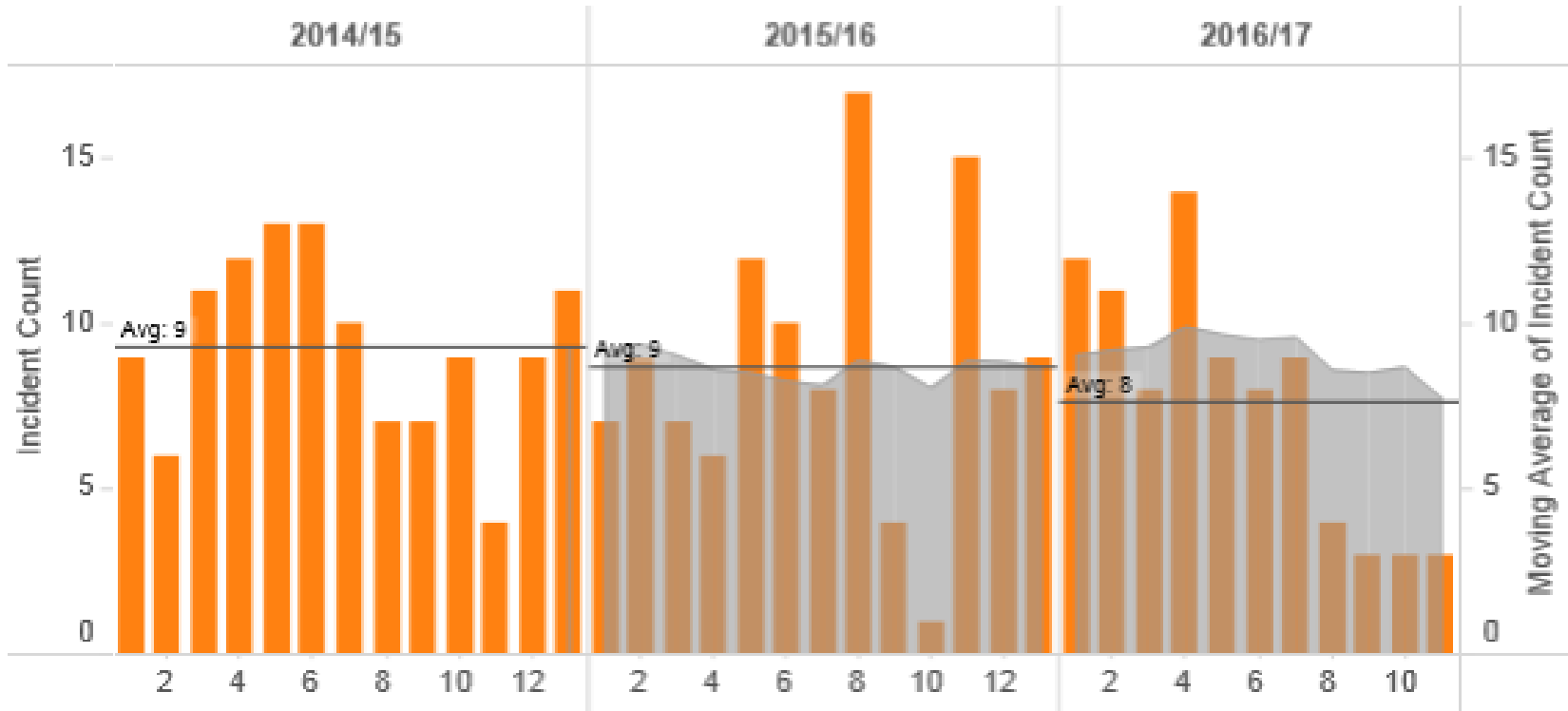
No incident = Zero impact to customers

# Delay Per Incident on Bedford Delivery Unit Area



The impact of each incident has increased by 20%, with more “larger” incidents

# No. of Incidents due to Track Faults on Bedford Delivery Unit Area



The Midland Main Line is currently experiencing some of the best track geometry and alignment results recorded.

# ***Recent Significant Performance Issues***

# *Luton Loss of Signalling*



**8<sup>th</sup> November 2016**

Impact:

17,059 minutes delay

1,151 PPM failures

## Carlton Road (near Kentish Town) – Power Issues

12<sup>th</sup> January 2017

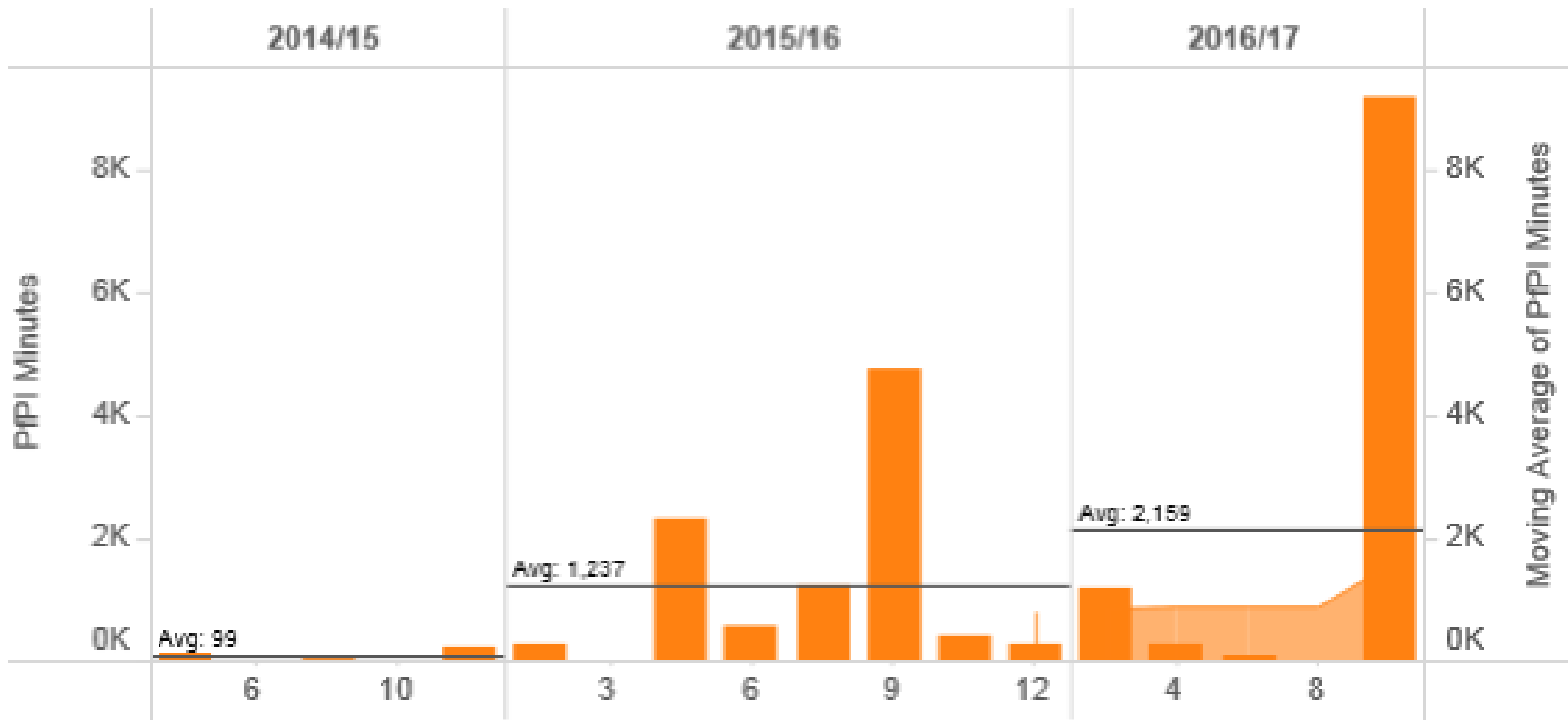
Impact:

5,711 minutes delay

153 PPM failures



# Storm Doris Impact





# Storm Doris – St. Albans



23<sup>rd</sup> February 2017



# ***Storm Doris – Harpenden***





# *Storm Doris – St. Albans*

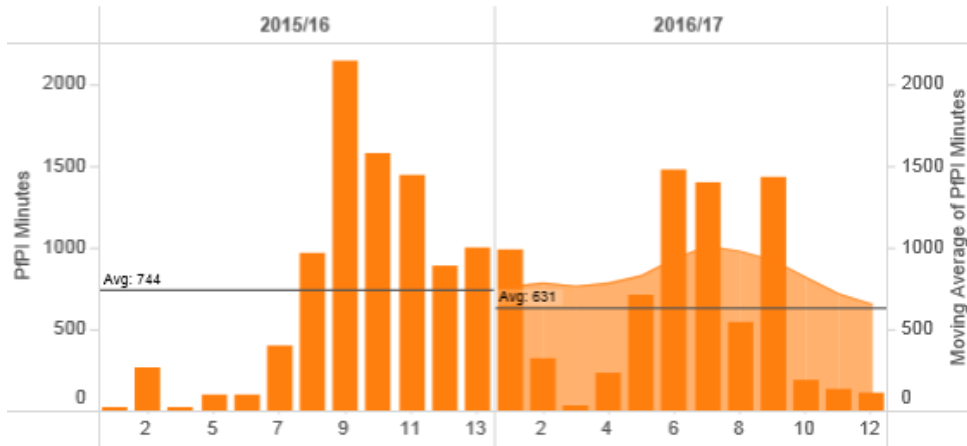


**23<sup>rd</sup> February 2017**



# Ongoing Programmes

## Temporary Speed Restrictions



BTP Embedded Officer

Vegetation Management

Additional Response Teams

## Thameslink Resilience Programme

Asset Category	Description	Approximate Spend (£m)
Track	Re- Rail	£2.62
Track	IBJ Replacement	£1.33
Track	Other (Reliability)	£0.67
Track	S & C refurb	£7.26
Off Track	Fencing	£21.53
Off Track	Vegetation	£9.73
Off Track	Drainage	£5.80
Off Track	Road Vehicle Incursion	£2.00
E & P	Elstree & Borehamwood Feeder solution development	£1.50
E & P	Signaling power improvements	£15.61
E & P	OLE campaigns	£8.52
E & P	Structures Renewal	£1.00
Signaling	Various signaling equipment	£16.56
Structures, Buildings & Geotech	Tunnels, Earthworks, Air conditioning, etc.	£2.10

